

SUPPLEMENTARY INFORMATION

Executive

28 May 2012

Agenda Item Number	Page	Title	Officer Responsible
6.	(Pages 1 - 32)	Bicester Masterplan Update – Presentation	Head of Strategic Planning and the Economy

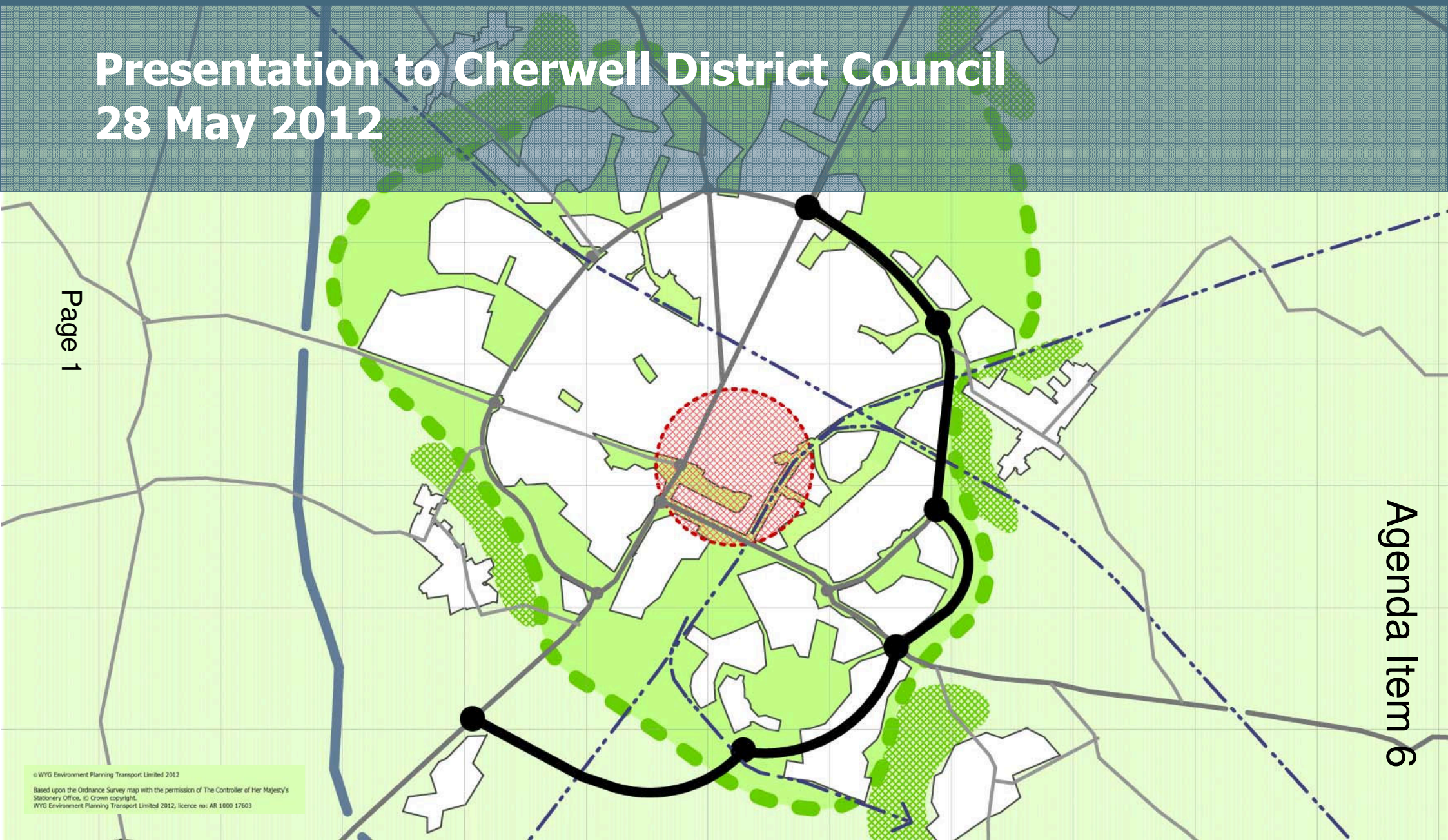
If you need any further information about the meeting please contact Natasha Clark, Democratic and Elections natasha.clark@cherwellandsouthnorthants.gov.uk, 01295 221589

This page is intentionally left blank

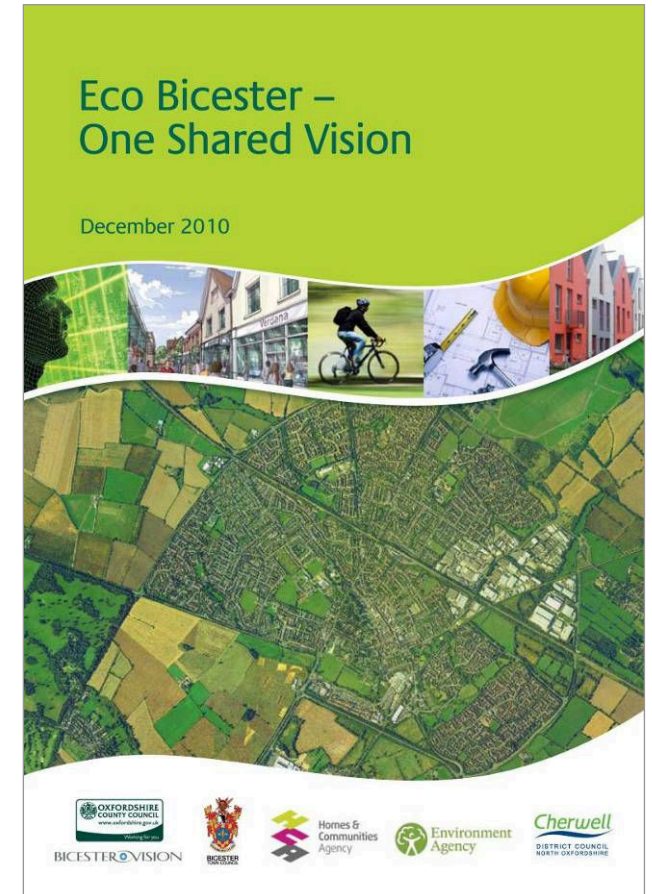
Presentation to Cherwell District Council 28 May 2012

Page 1

Agenda Item 6

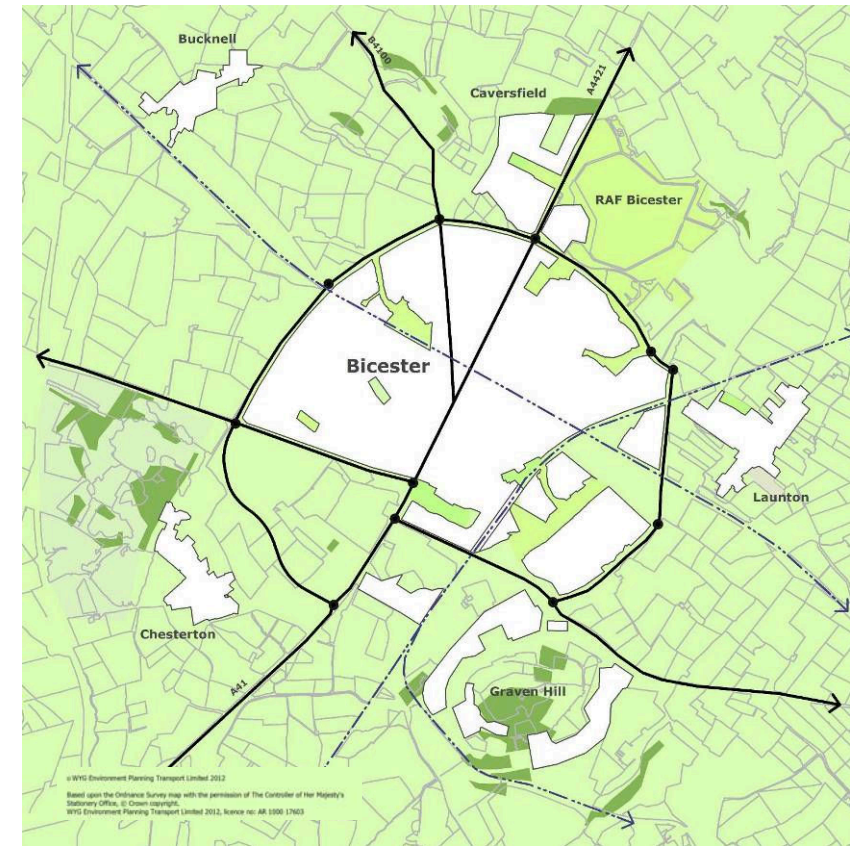


- **Background**
- **Proposals**
- **Strategic objectives**
- **Concept masterplan**
- **Masterplan framework**
 - **Employment**
 - **Residential**
 - **Access & movement**
 - **Open space**
 - **Town Centre**
- **Actions and initiatives**
- **Outputs**
- **Delivery and timescale**



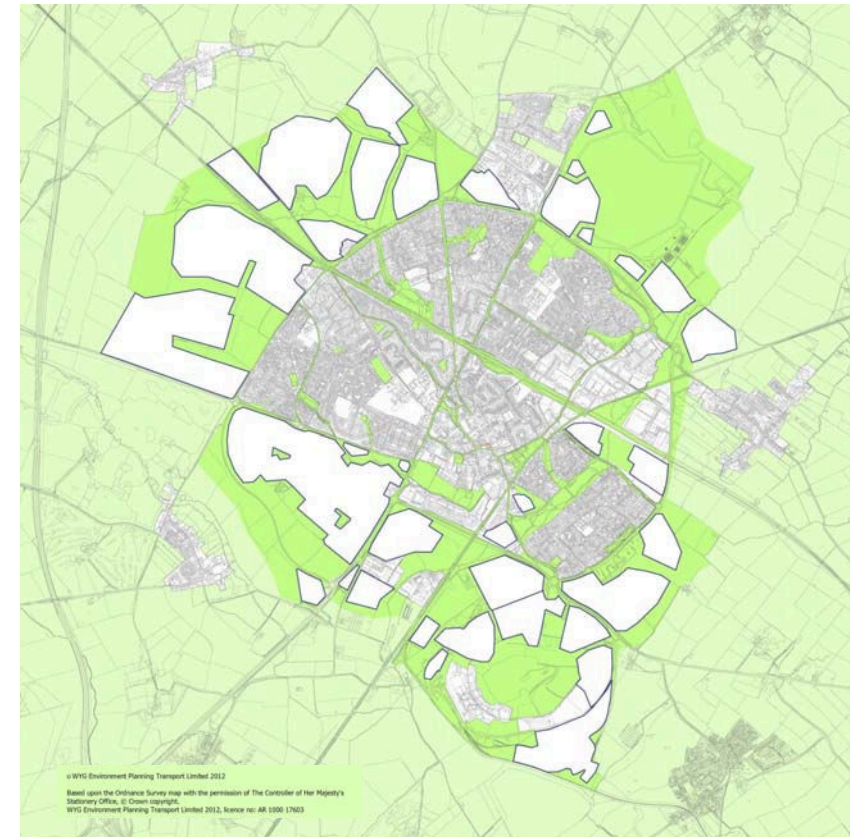
Background:

- **Commissioned in November 2011 to**
 - **Redefine the long term role of the town;**
 - **identify the functions to support the new role;**
 - **Integrate the committed and planned schemes into the new vision; and,**
 - **Plan and connect the functions together in a sustainable way; and,**
- **Engaged with key local stakeholders**
- **Presented a concept masterplan in January 2012;**
- **Reviewed the potential scale of the town;**
- **Identified the key projects; and,**
- **The broad range of actions needed to deliver the masterplan.**



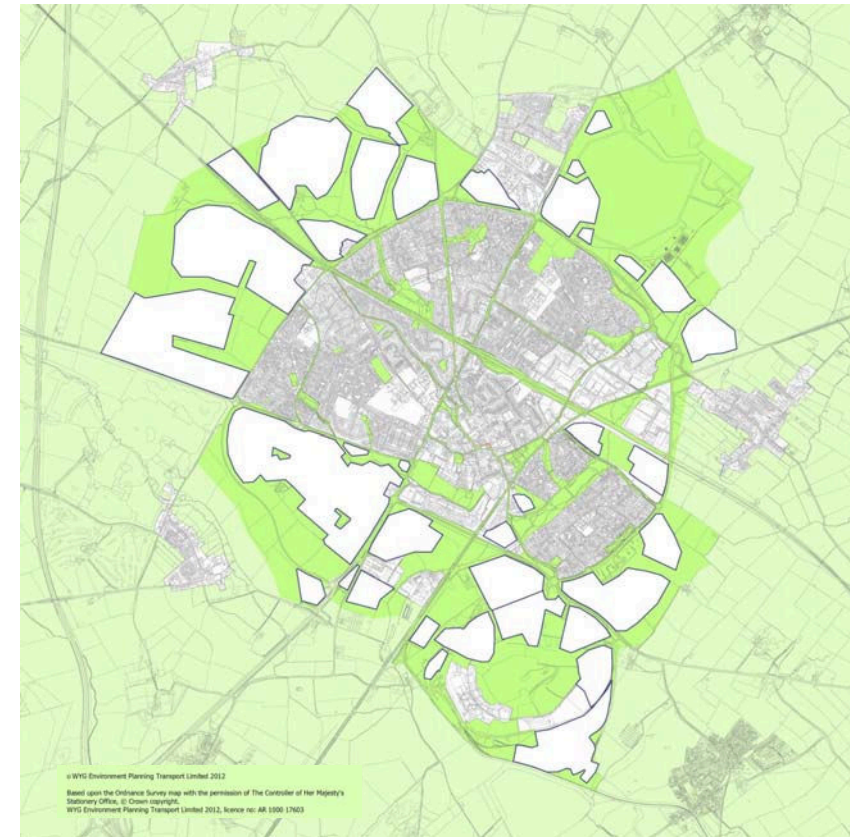
Proposals:

- **Identified strategic objectives for the future town;**
- **Prepared a framework masterplan of the opportunities;**
- **Established the type and location of new developments;**
- **Identified the amount of new development, jobs and homes;**
- **The actions needed to deliver the masterplan; and,**
- **Completed the movement strategy.**



Strategic Objectives:

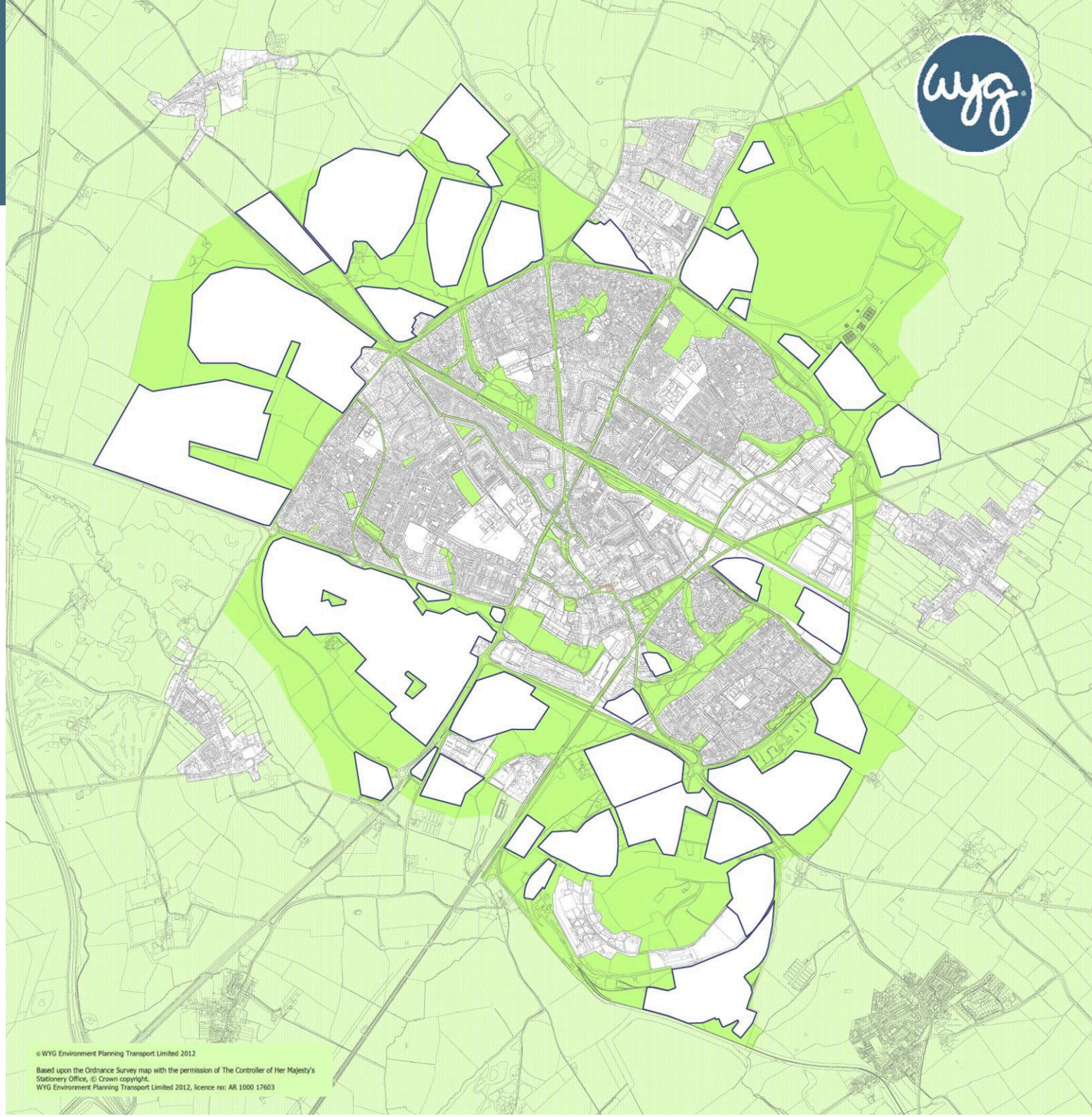
- **Deliver sustainable growth for the area through new job opportunities and a growing population;**
- **A desirable employment location that supports local distinctiveness and economic growth;**
- **A sustainable community with a comprehensive range of social, health, sports and community functions;**
- **A vibrant and attractive town centre with a full range of retail, community and leisure facilities;**
- **Deliver an exemplar eco-town in NW Bicester, building upon Eco Bicester – One Shared Vision;**
- **A safe and caring community set within attractive landscaped spaces;**
- **Business and community networks to promote the town and the eco development principles; and**
- **A continuing destination for international visitors to Bicester Village and other destinations in the area.**



Bicester Masterplan

Growth Areas:

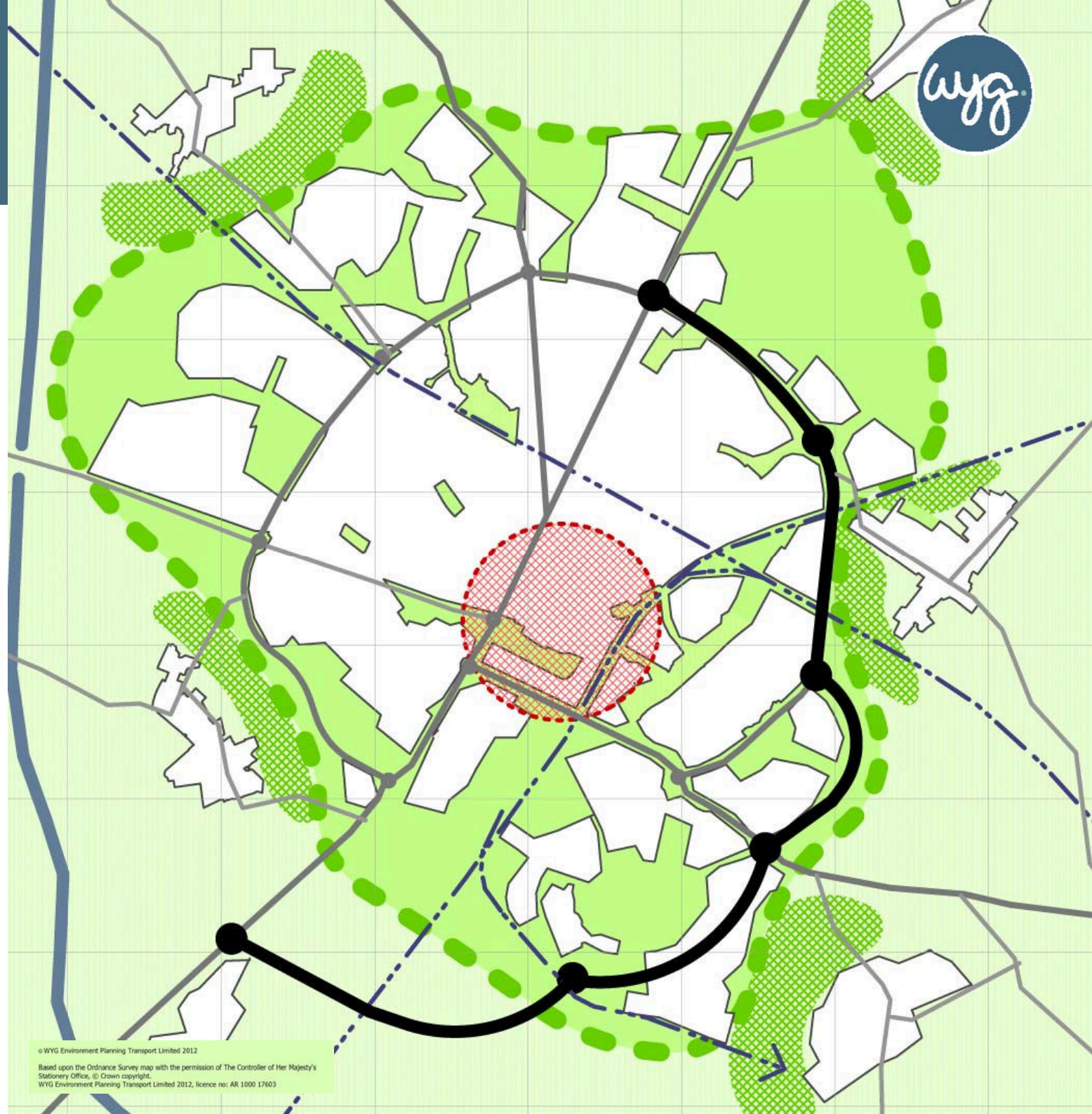
- A comprehensive range of employment opportunities;
- Housing sites to deliver the Local Plan requirements up to 2031 and on towards to 2040;
- A network of open spaces;





Key initiatives:

- Define the growth of the town and the separation from the villages;
- Establish a strategic transport and movement network; and,
- Deliver a town centre action area.

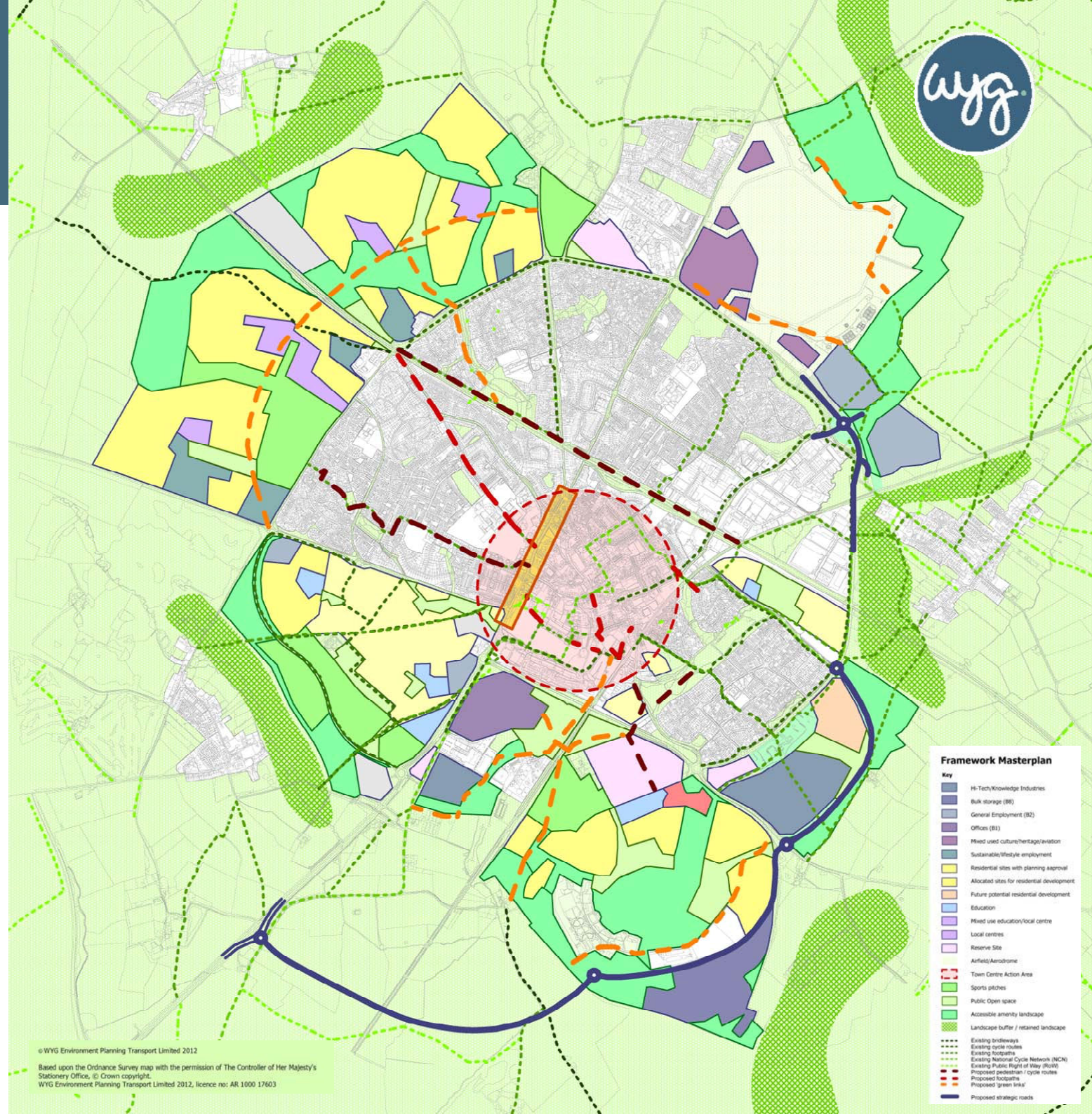


Bicester Masterplan

Framework :

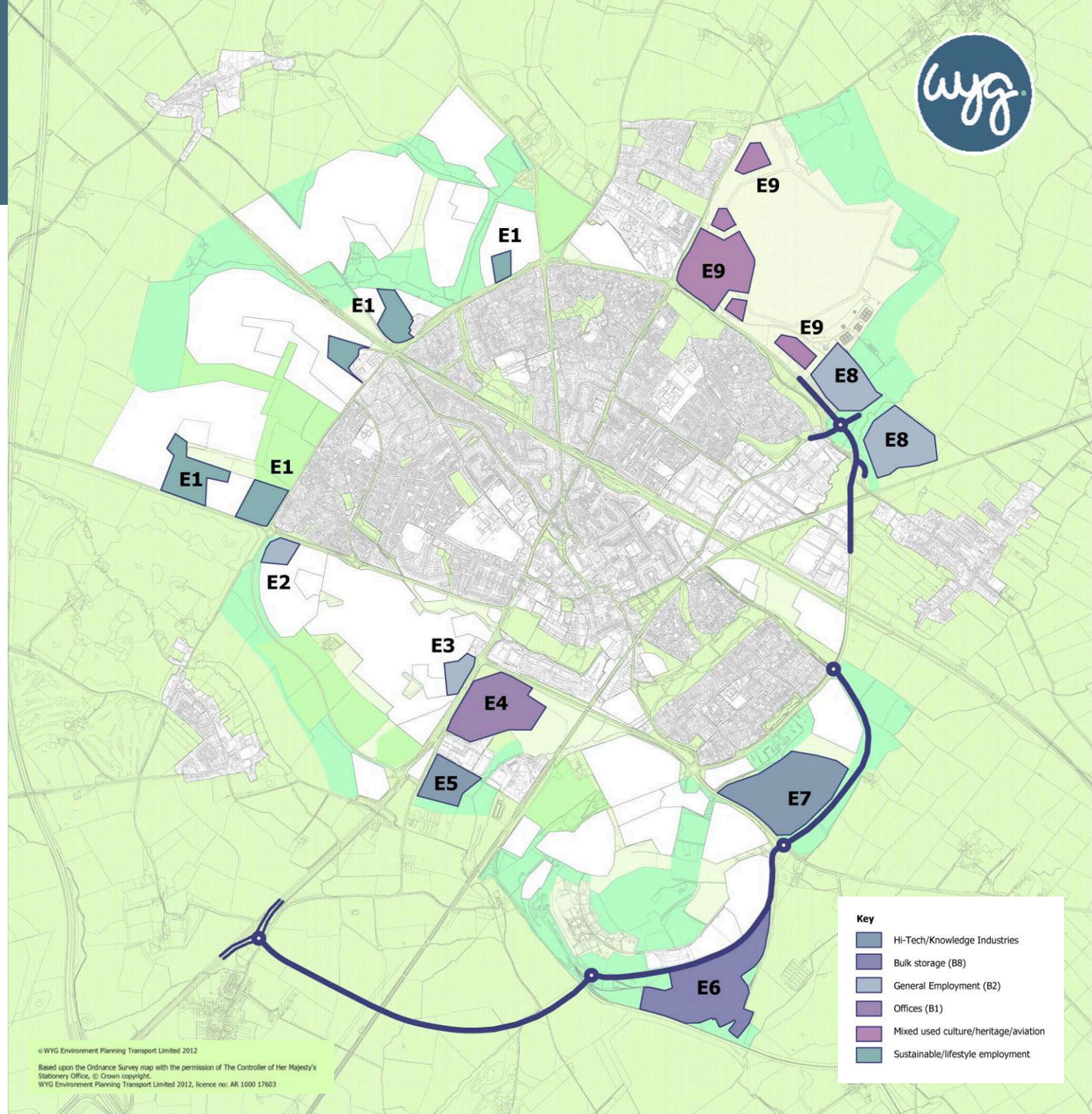
- Employment
- Residential
- Access & movement
- Open space
- Town centre

Page 8



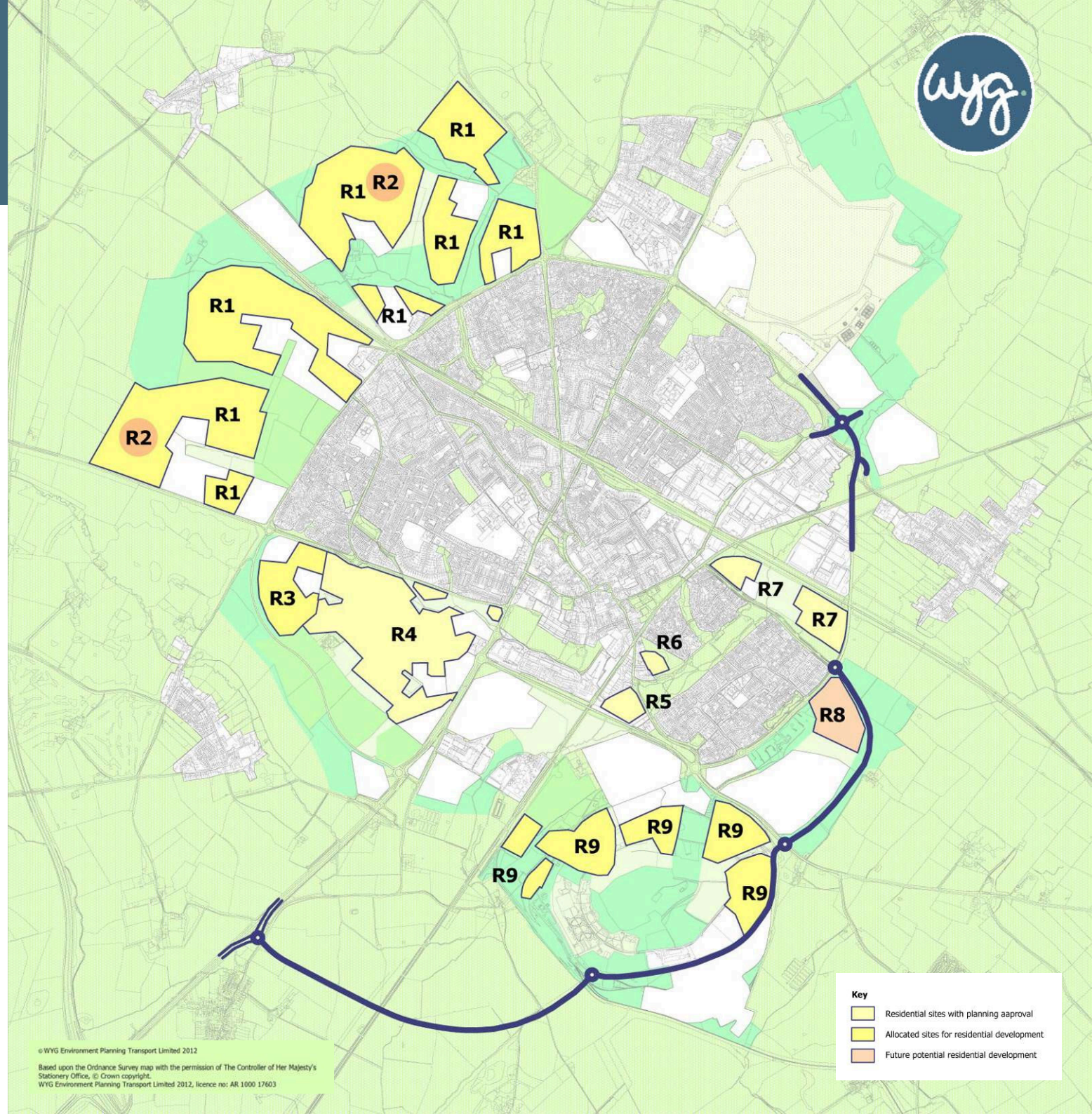
Employment:

- Sustainable lifestyle employment;
 - General industrial development;
 - Office development;
 - Hi-tech knowledge industries;
 - Logistics and distribution; and
 - Mixed use employment.
-
- Plus future expansion in retailing, health and education.



Residential:

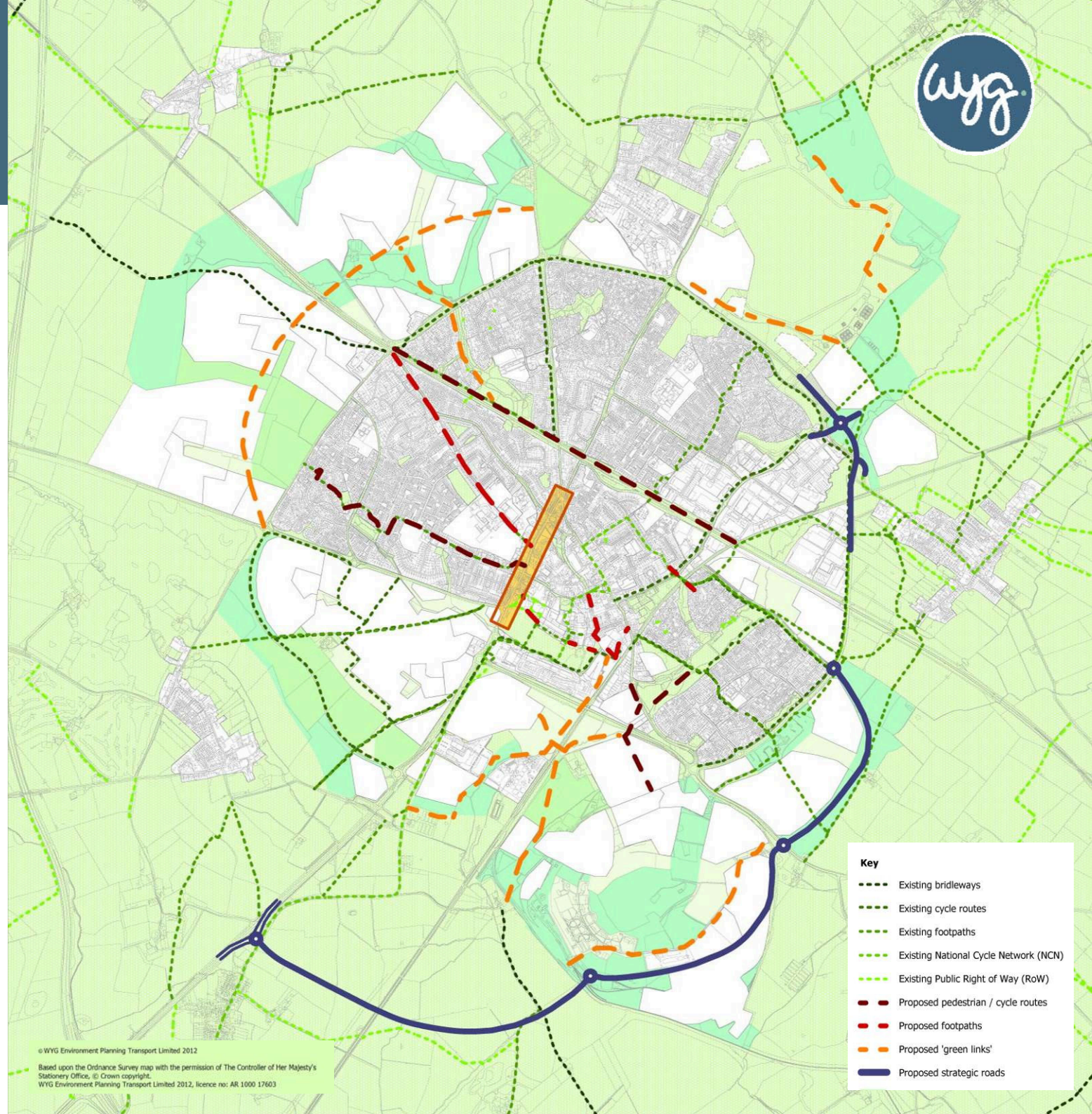
- Land with planning consent;
- Land allocated for residential development; and,
- Sites that have the potential for future residential development.



Bicester Masterplan

Access & movement:

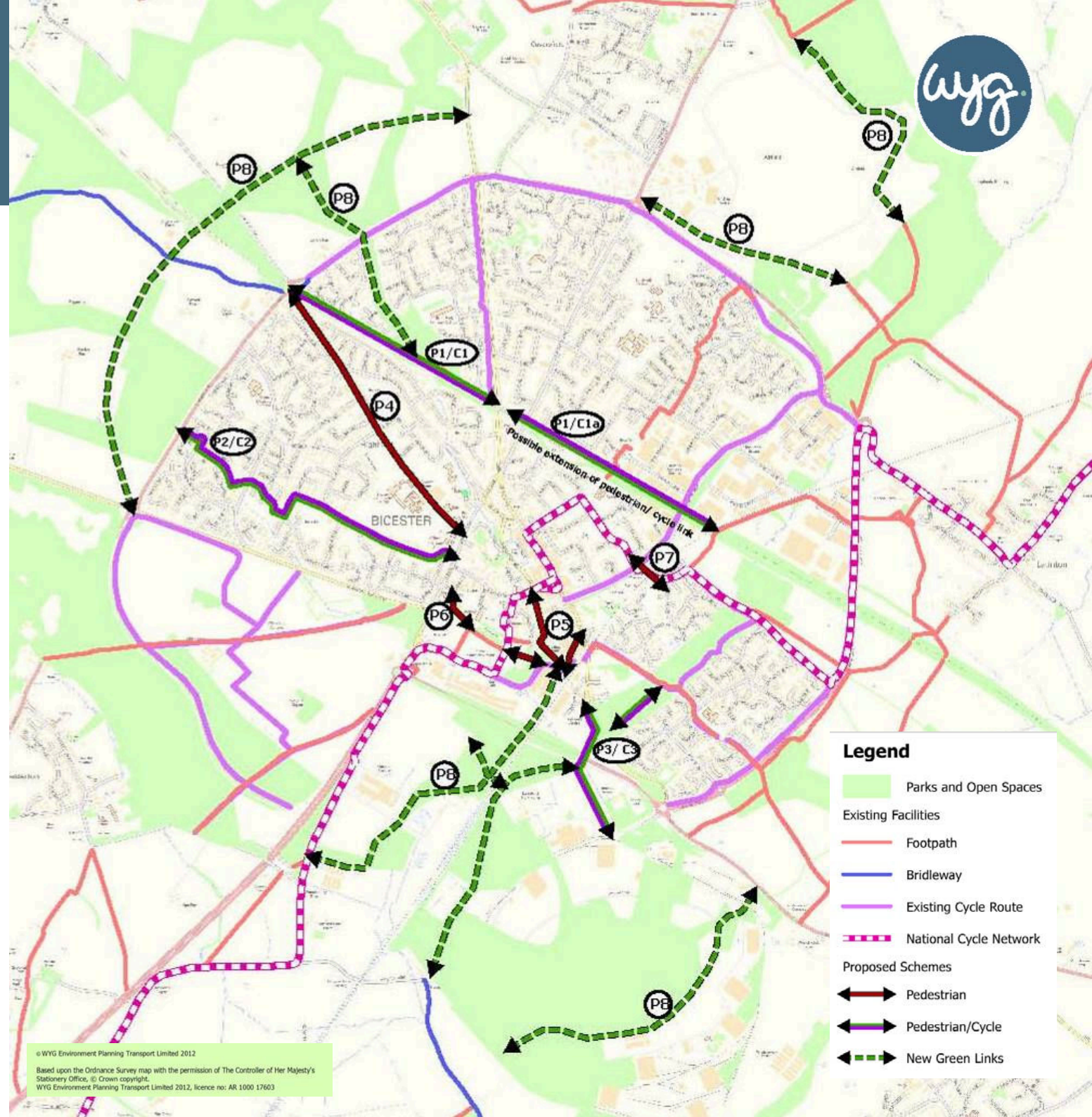
- Pedestrian and cycle connections;
- Public transport;
- North-south strategic road network; and
- Road network improvements.



Bicester Masterplan

Pedestrian and cycle access:

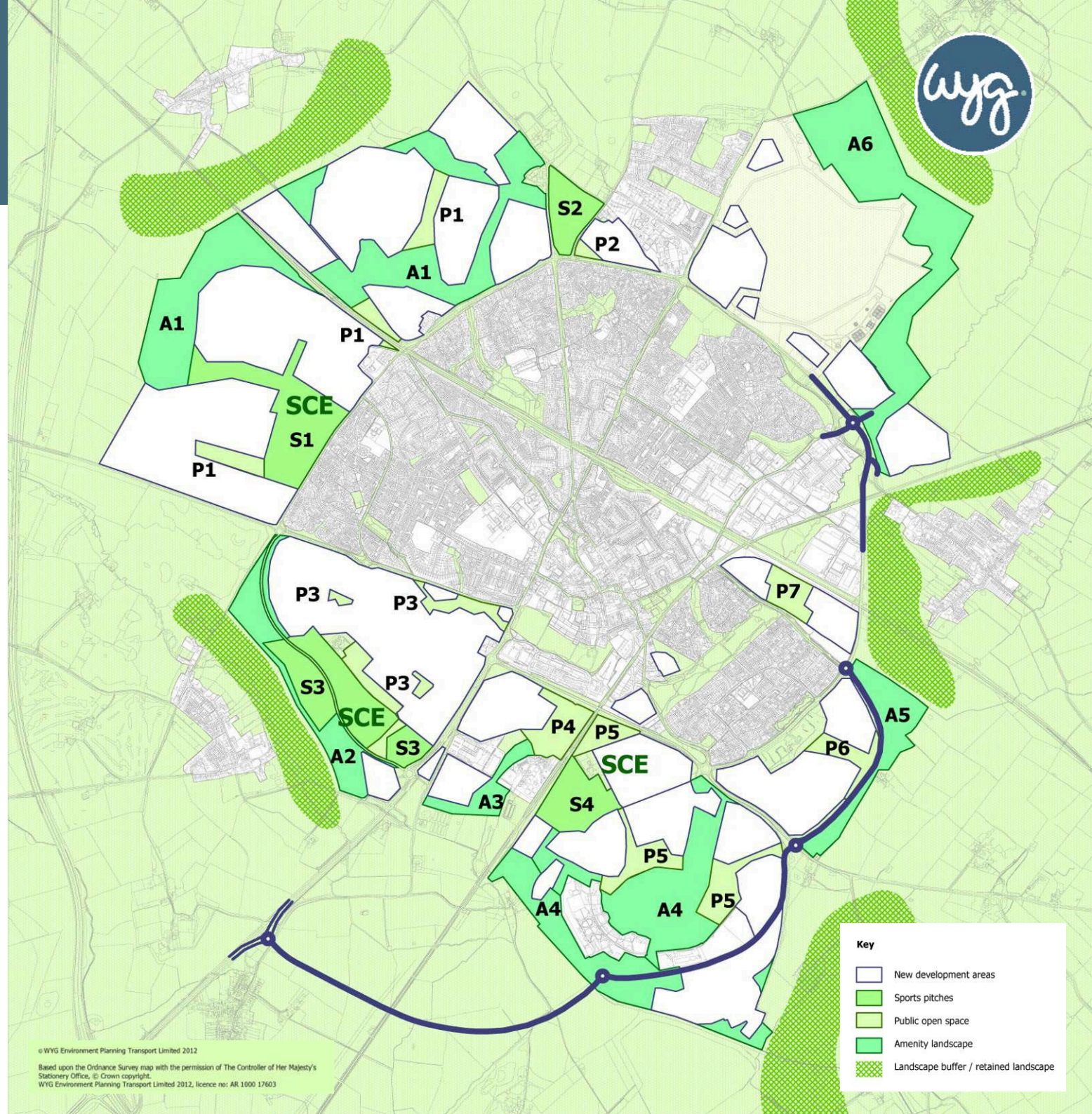
- Pedestrian and cycle connections;
- Public transport;
- North-south strategic road network; and
- Road network improvements.





Green Infrastructure:

- Sports pitches and a potential sporting centre of excellence;
- Public open space;
- Accessible amenity landscape areas; and,
- Burial ground in NW Bicester
- Strategic landscape separation areas.





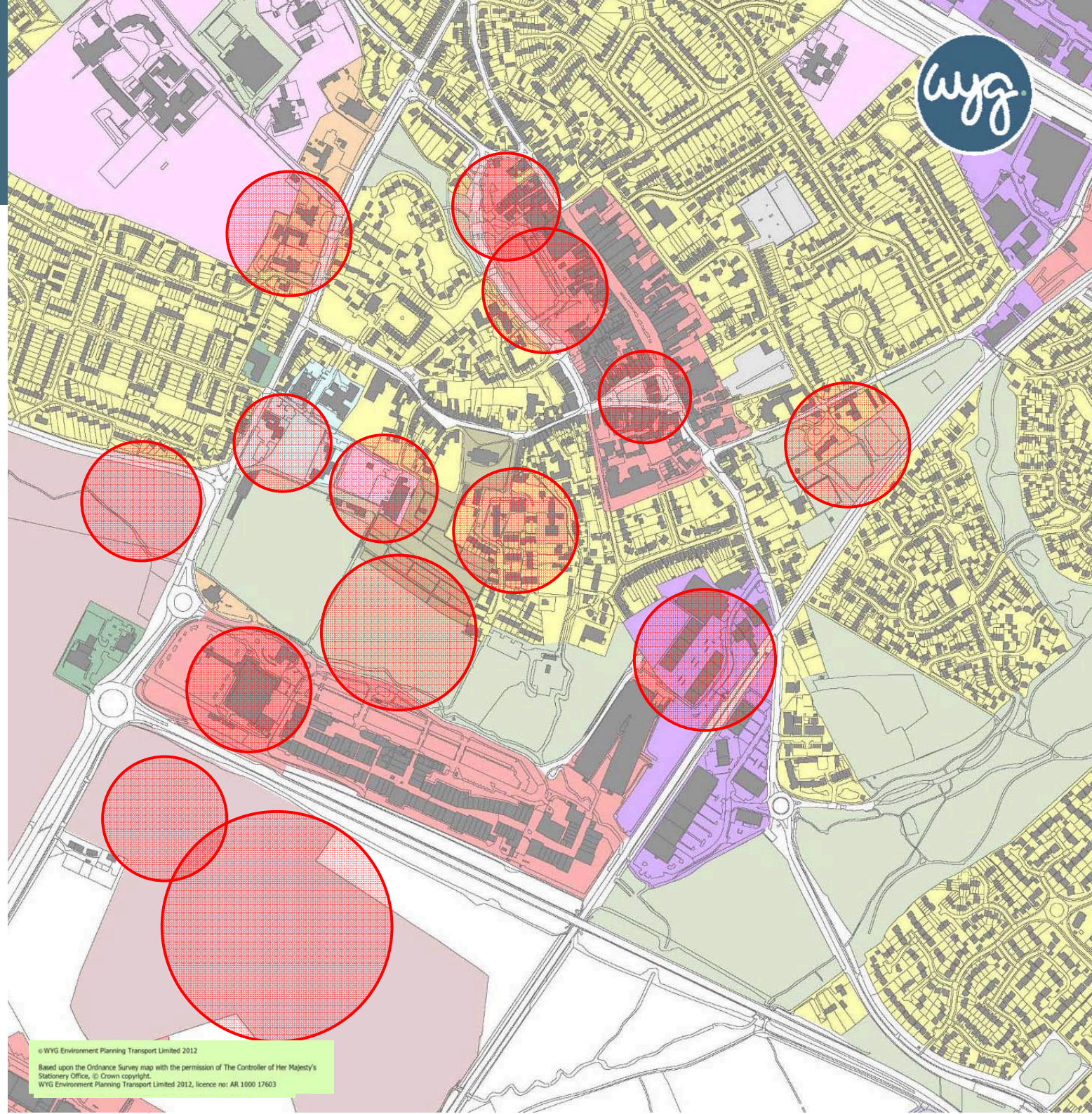
Town Centre :

- Bicester needs a vibrant town centre and a full range of facilities to service the planned expansion
- The scale of the change is substantial
- A coordinated approach is needed to the many separate initiatives



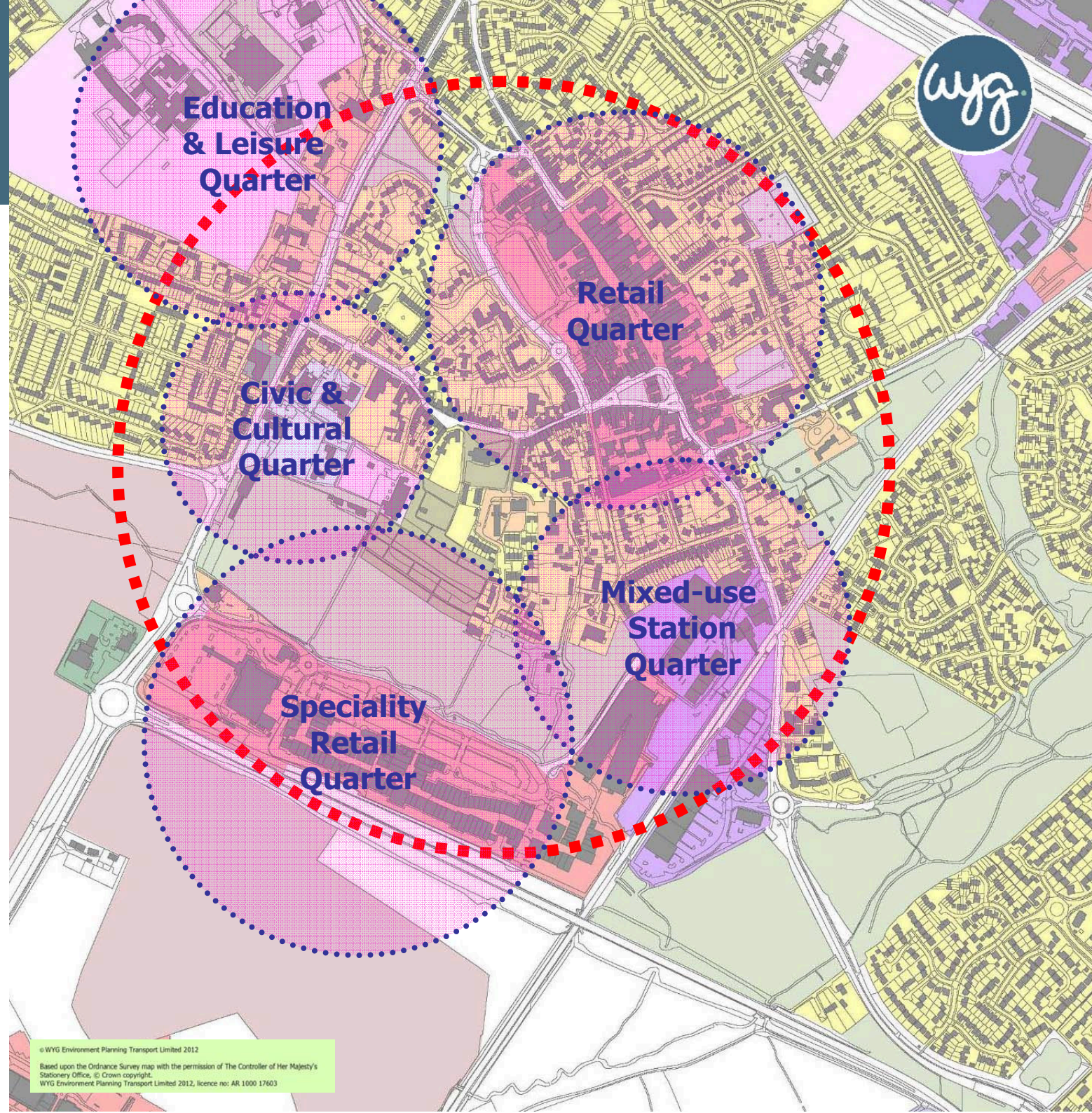
Town Centre :

- The separate projects indicated in circles all impact on the town centre
- A Town Centre Action Area is required to guide the long term development of the area



Town Centre :

- Expand the potential of the town centre
- Establish distinct quarters that work together to deliver the expanded town centre facilities



Bicester Masterplan

Town Centre:

- Building blocks where change can take place
- Establish an urban structure to complement the conservation area
- Linkages and connections to join the activities together

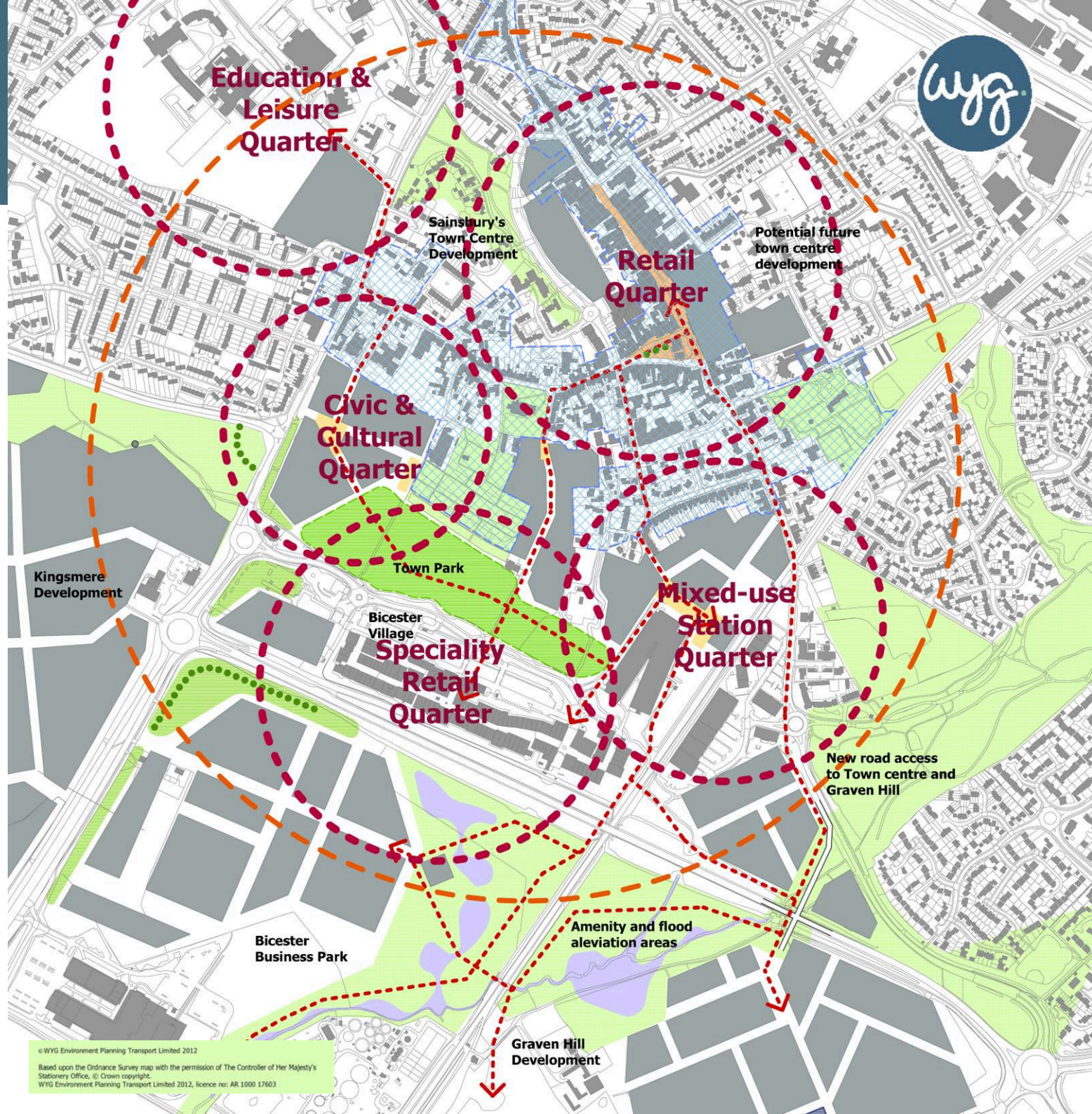
Page 17



Bicester Masterplan

Town Centre :

- Speciality shopping with local identity
- Destination of choice for surrounding area
- A full range of retail, health, community and professional services
- Arts, cultural and leisure facilities
- Regular markets and festivals
- An attractive environment with a strong sense of place
- A destination for visitors and tourists
- Sustainable public transport network with a comprehensive pedestrian and cycle network.



Bicester Masterplan

Town Centre :

- New streets
- Attractive buildings
- Memorable places
- A new Town Park
- A destination for visitors
- Connected to new employment areas and neighbourhoods

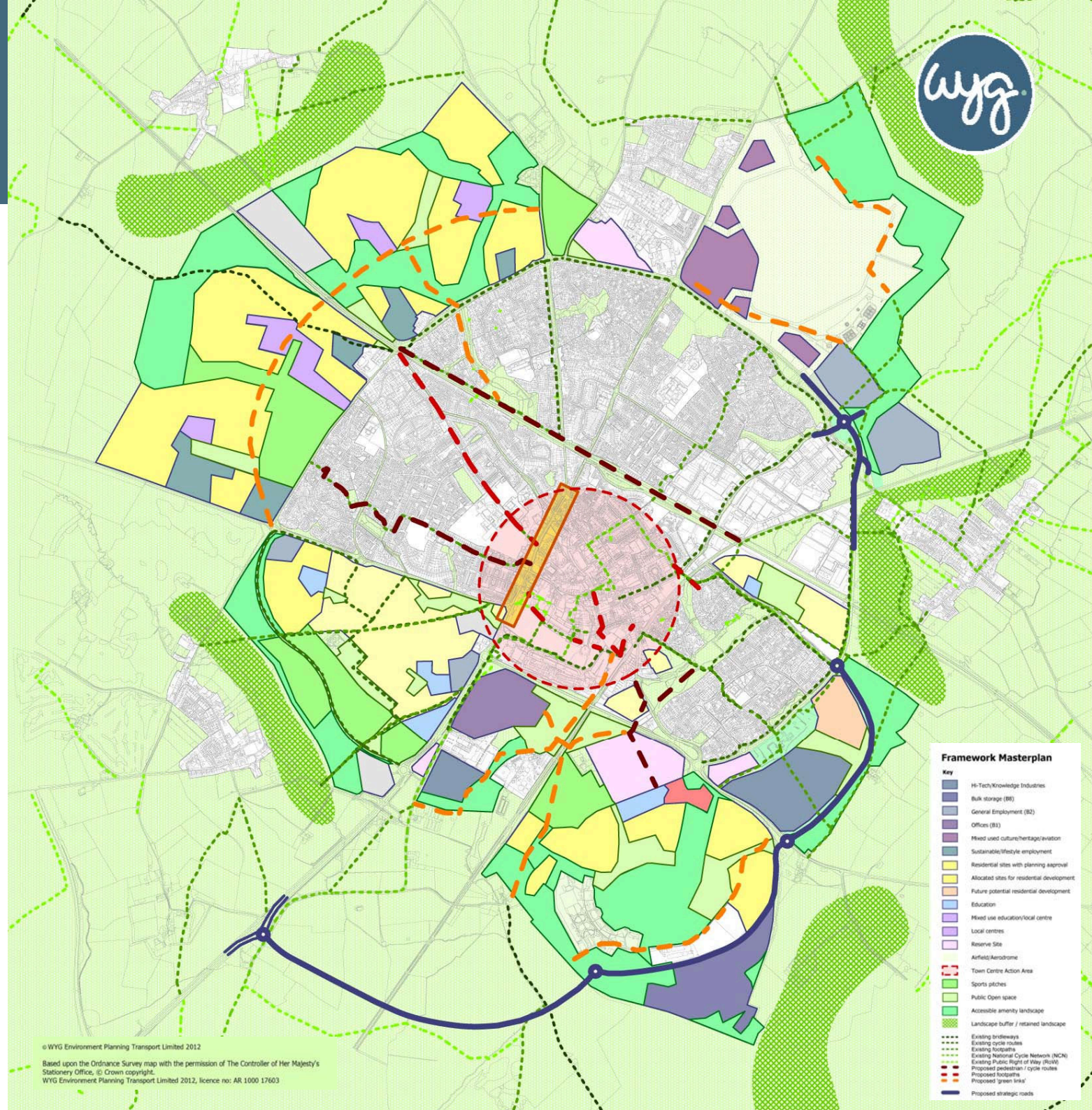


Bicester Masterplan

Delivery:

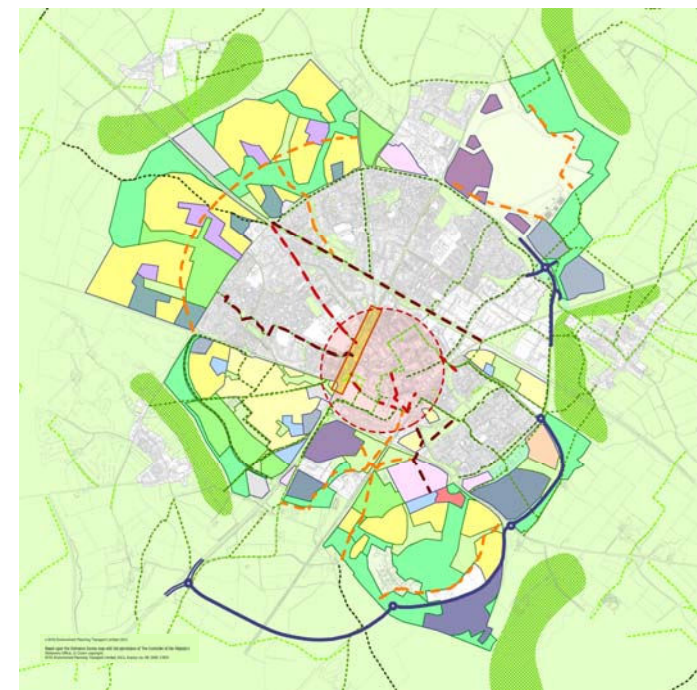
- Identifying the key actions and initiatives to deliver this plan
- Quantifying the outputs
- Recommending the mechanisms and organisations required to manage the process

Page 20



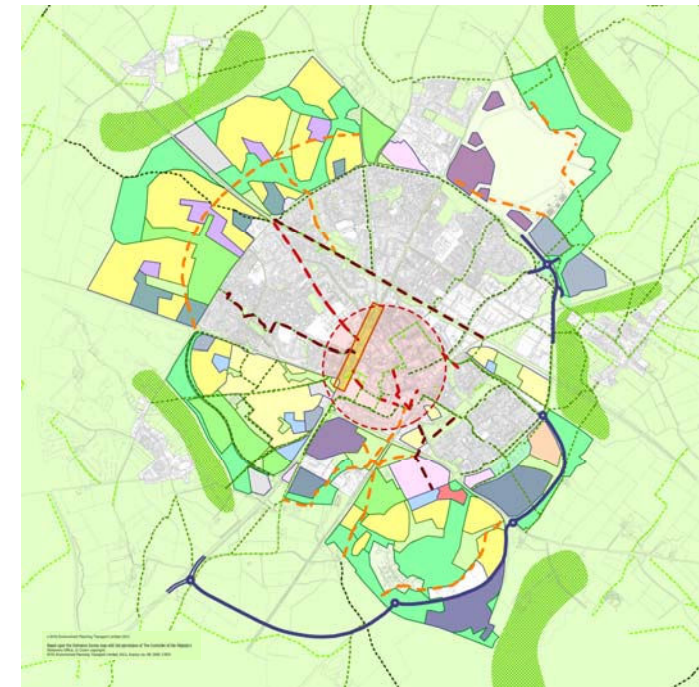
Actions and initiatives:

- An expanding economy;
- Community first;
- Transport movement and access;
- Environmental sustainability; and,
- A place to live.



Outputs:

- **Between 15,000 to 20,000 new jobs on land allocated for business, manufacturing, industrial and research employment;**
- **Increased town centre activity and new jobs;**
- **A total of 10,300 new homes;**
 - 6,579 new homes up to 2031
 - and a further 3,581 by 2040;
- **440 ha of land allocated for green infrastructure including 90 ha for sports pitches, 70 ha for open space and 280 ha for amenity areas;**
- **Land identified as strategic landscape separation between Bicester and villages; and,**
- **Improved transport network**



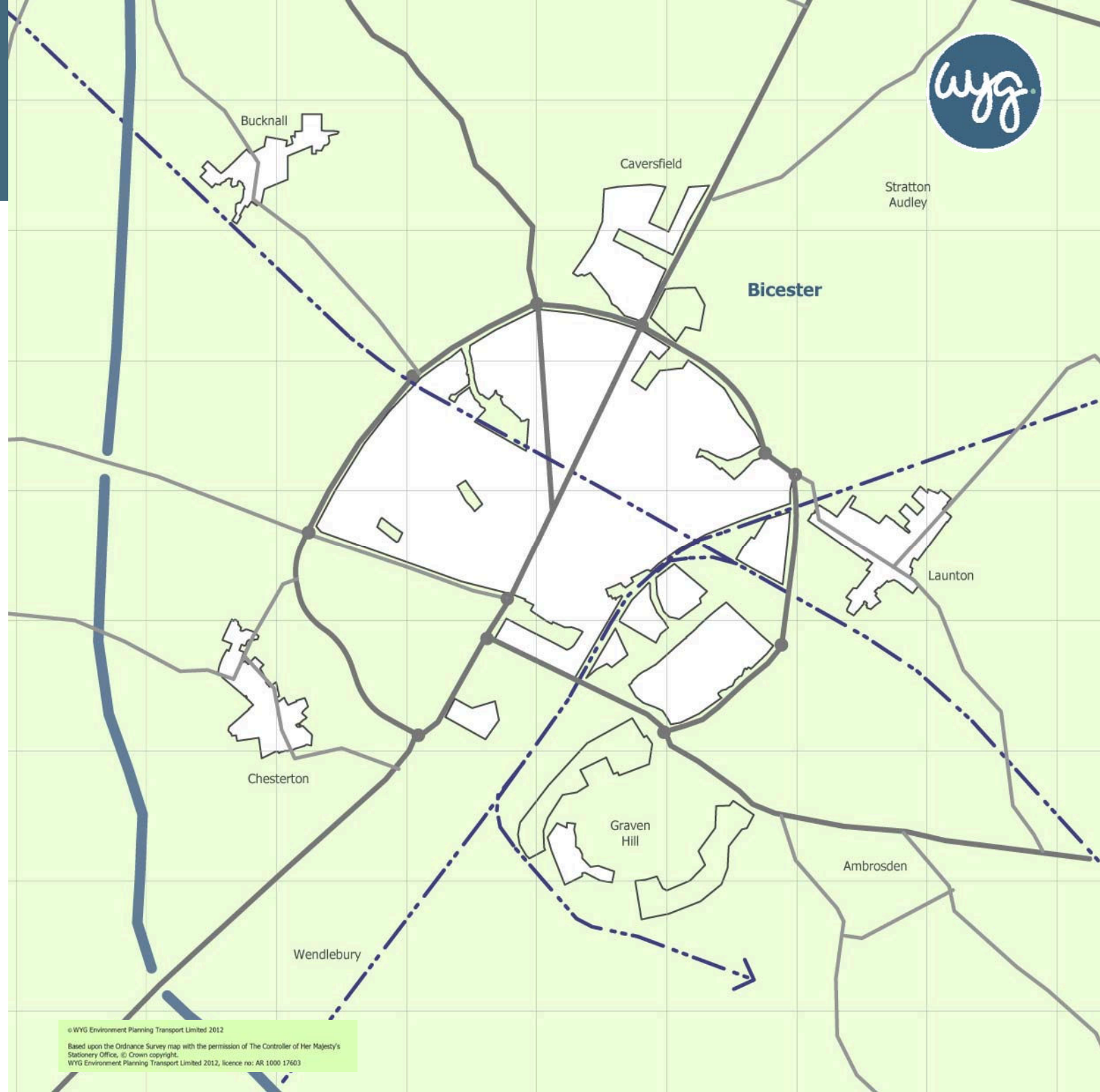
Bicester Masterplan



Phasing:

- 2016
- 2021
- 2026
- 2031
- 2036
- 2041

Page 23



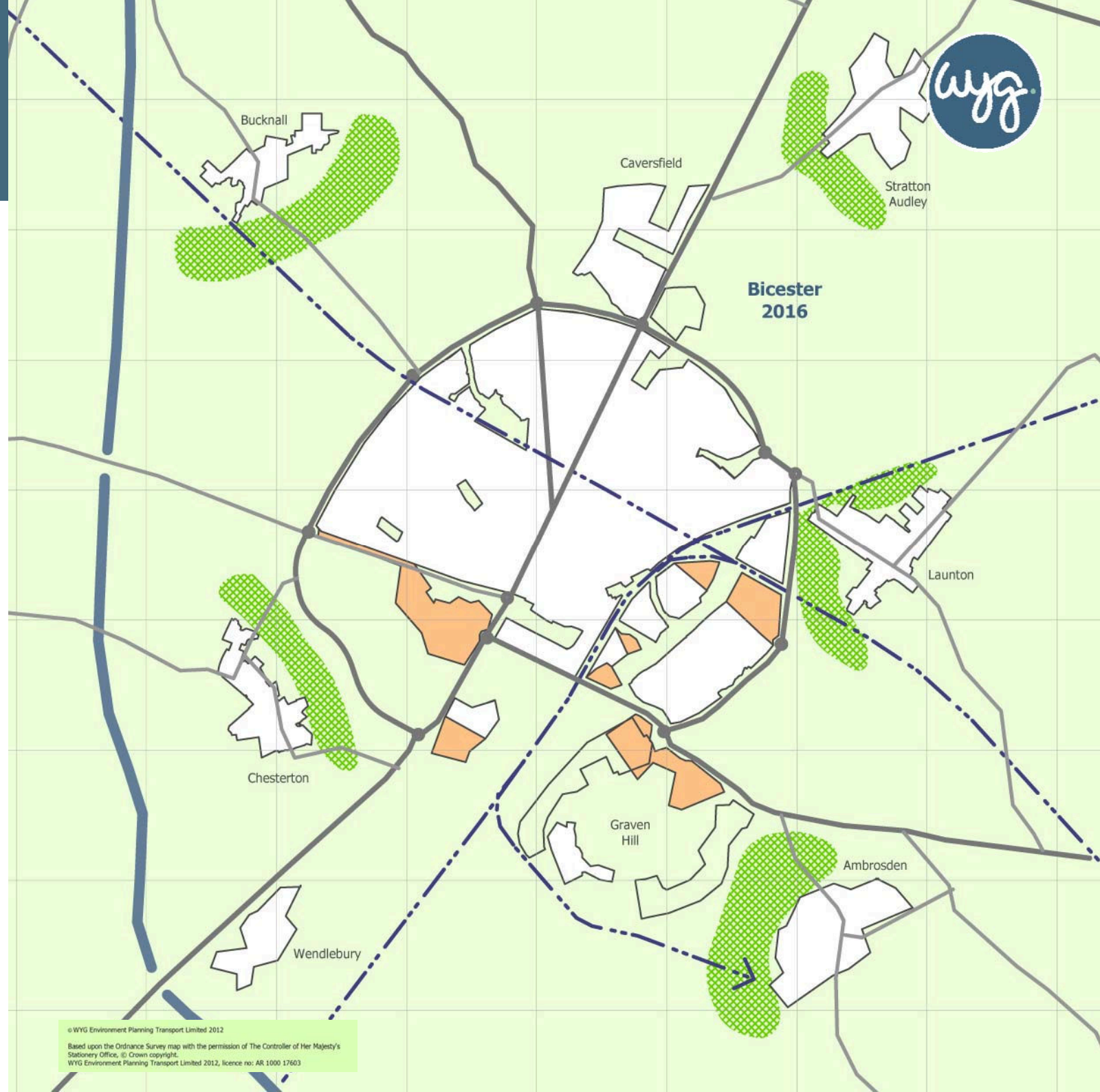
Bicester Masterplan



Phasing:

- 2016
- 2021
- 2026
- 2031
- 2036
- 2041

Page 24



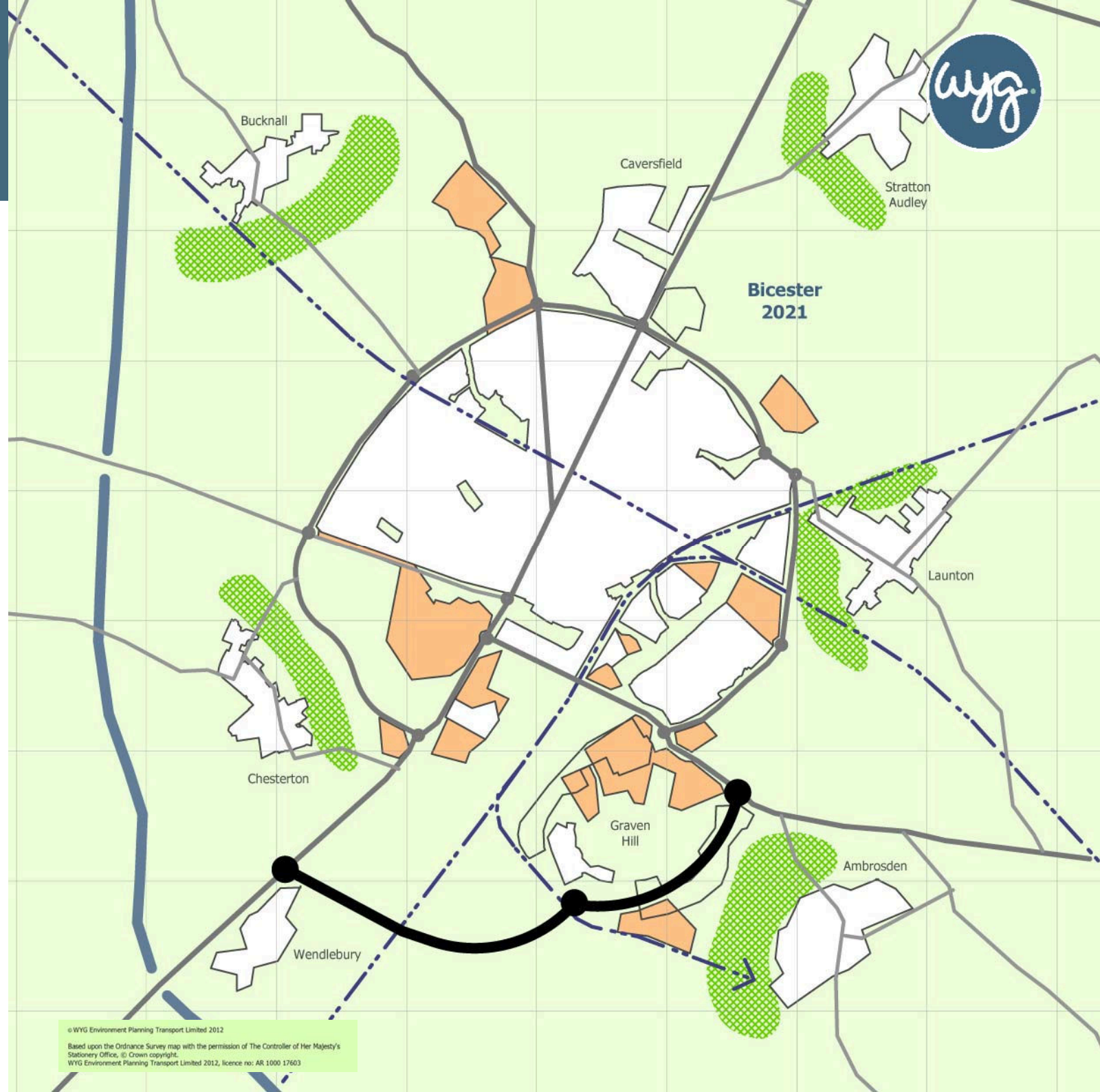
Bicester Masterplan



Phasing:

- 2016
- 2021
- 2026
- 2031
- 2036
- 2041

Page 25



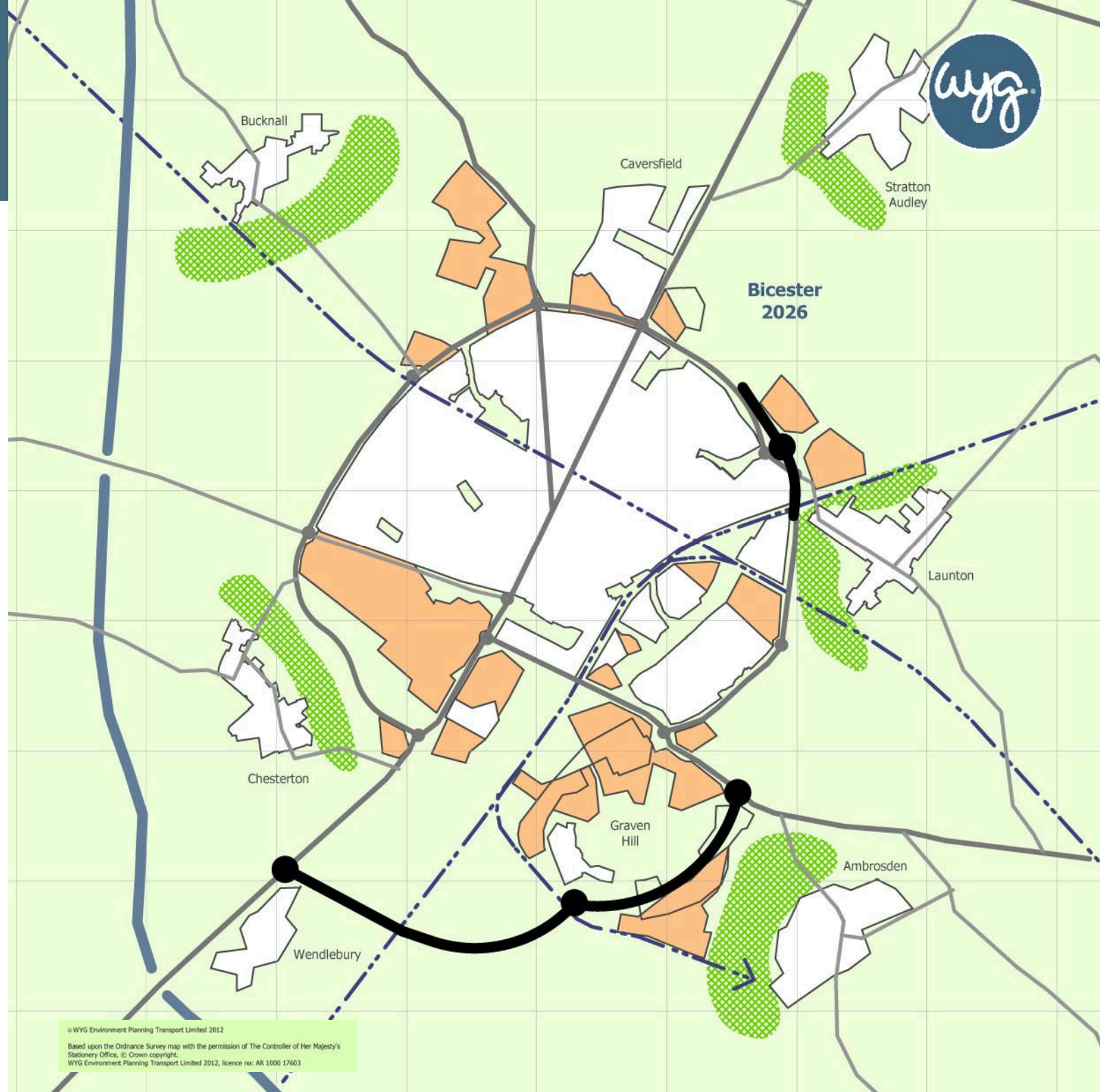
Bicester Masterplan



Phasing:

- 2016
- 2021
- 2026
- 2031
- 2036
- 2041

Page 26



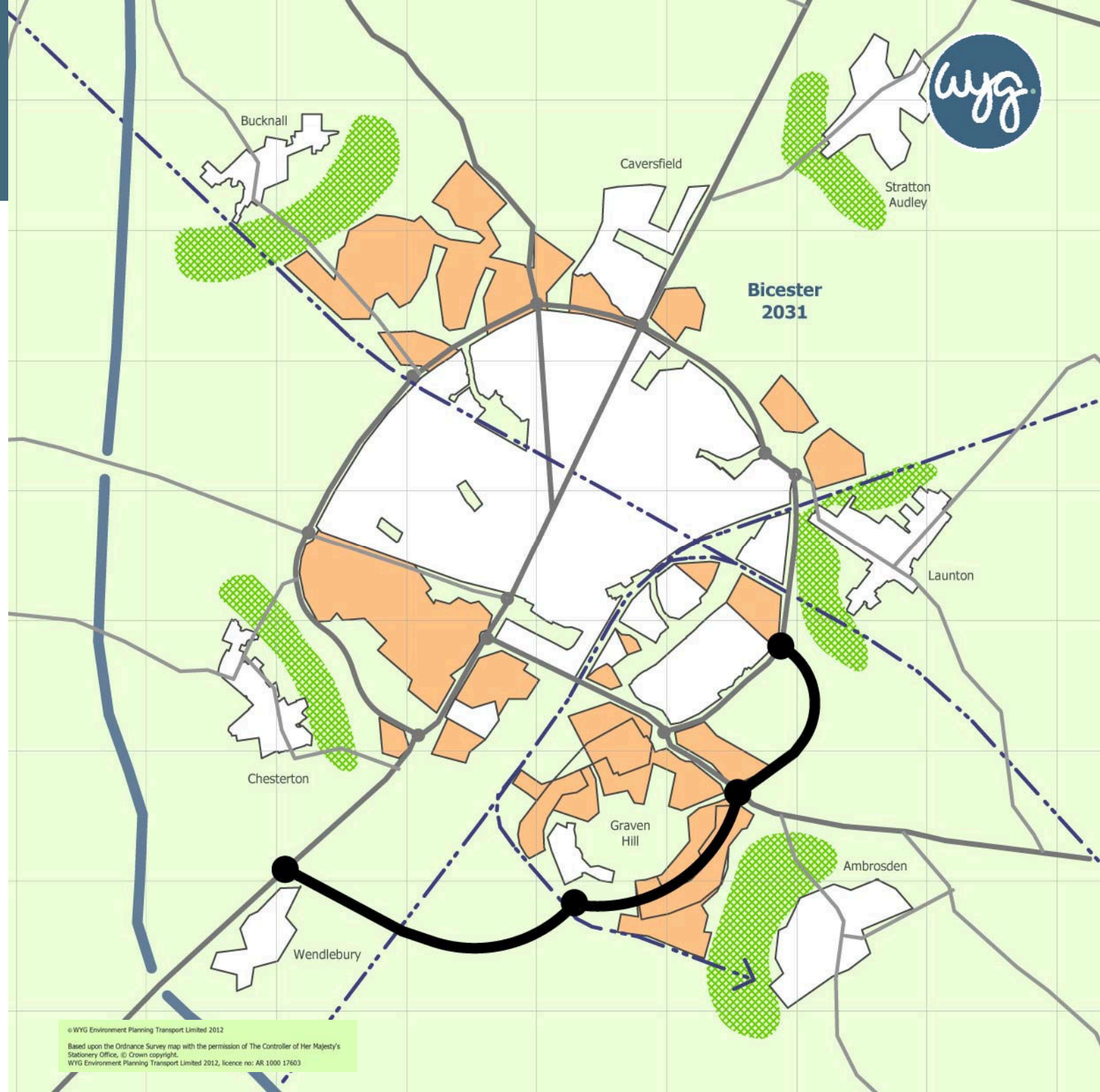
Bicester Masterplan



Phasing:

- 2016
- 2021
- 2026
- 2031
- 2036
- 2041

Page 27



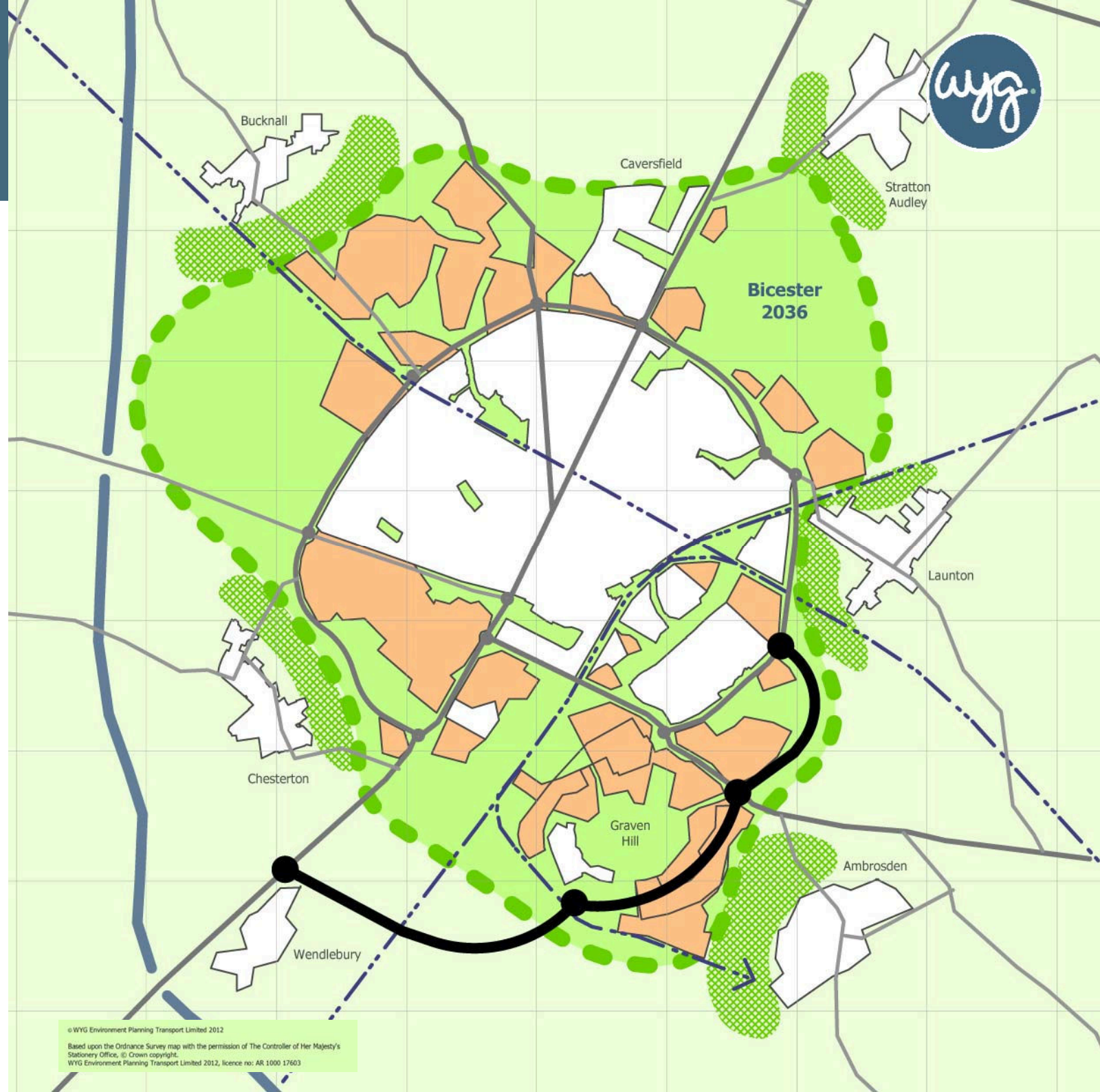
Bicester Masterplan



Phasing:

- 2016
- 2021
- 2026
- 2031
- 2036
- 2041

Page 28



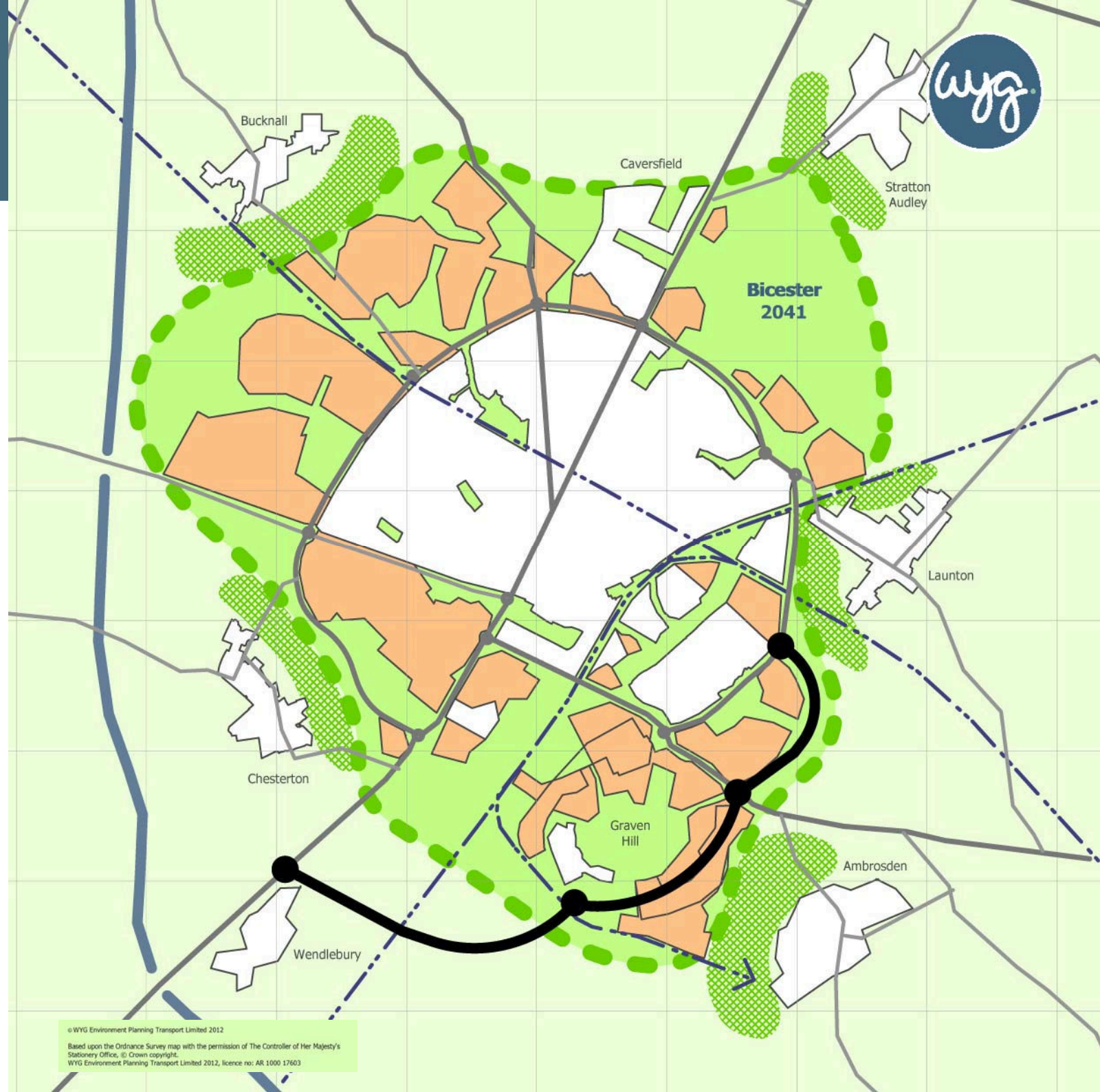
Bicester Masterplan



Phasing:

- 2016
- 2021
- 2026
- 2031
- 2036
- 2041

Page 29



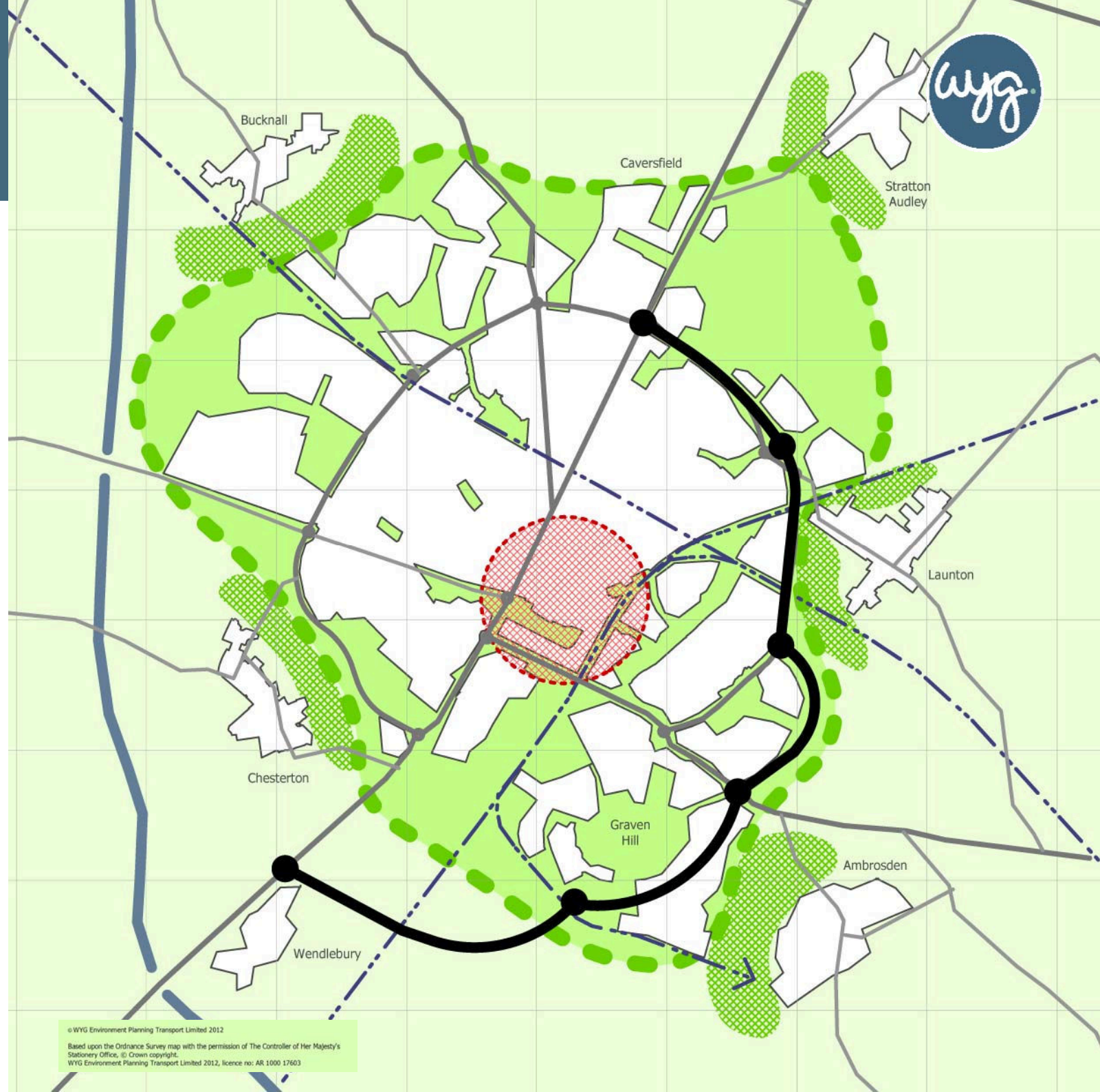
Bicester Masterplan



Phasing:

- 2016
- 2021
- 2026
- 2031
- 2036
- 2041

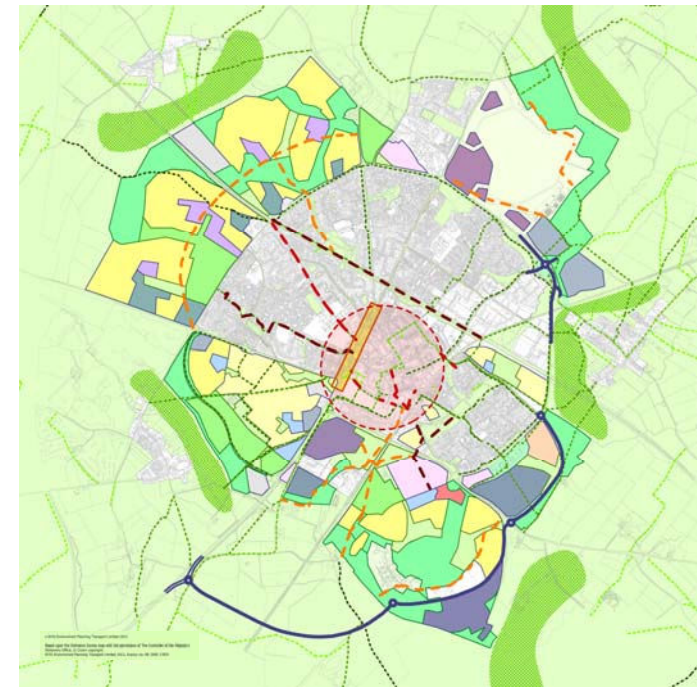
Page 30



Enabling mechanisms:

- **Delivery of the improvements to the strategic road network**
- **Establish a Bicester Marketing Board to promote Bicester as an employment location.**
- **Establish a Town Centre Board to coordinate the design and delivery of the Town Centre Action Area.**
- **Appoint a Design Panel to improve the design quality and eco credentials of all new developments.**
- **Section 106 contributions and the implementation of a Community Infrastructure Levy (CIL).**

Page 31



Bicester Masterplan

Summary:

- Redefined the long term role of the town;
- Identified the functions to support the new role;
- Integrated committed, planned and new projects into the vision.
- Connected the functions together in a sustainable way; and,
- Coordinated this work with the new local plan.

